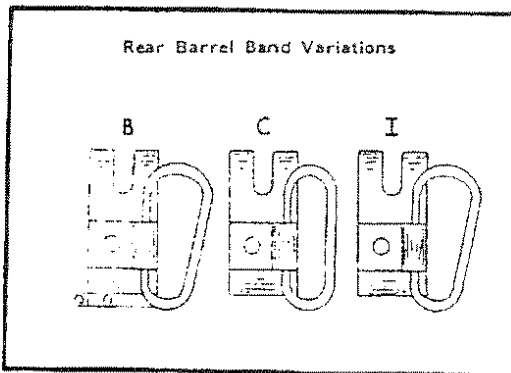
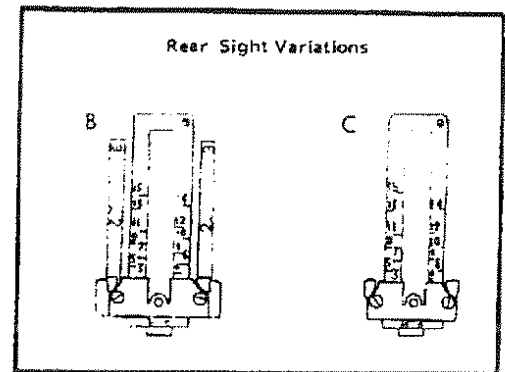
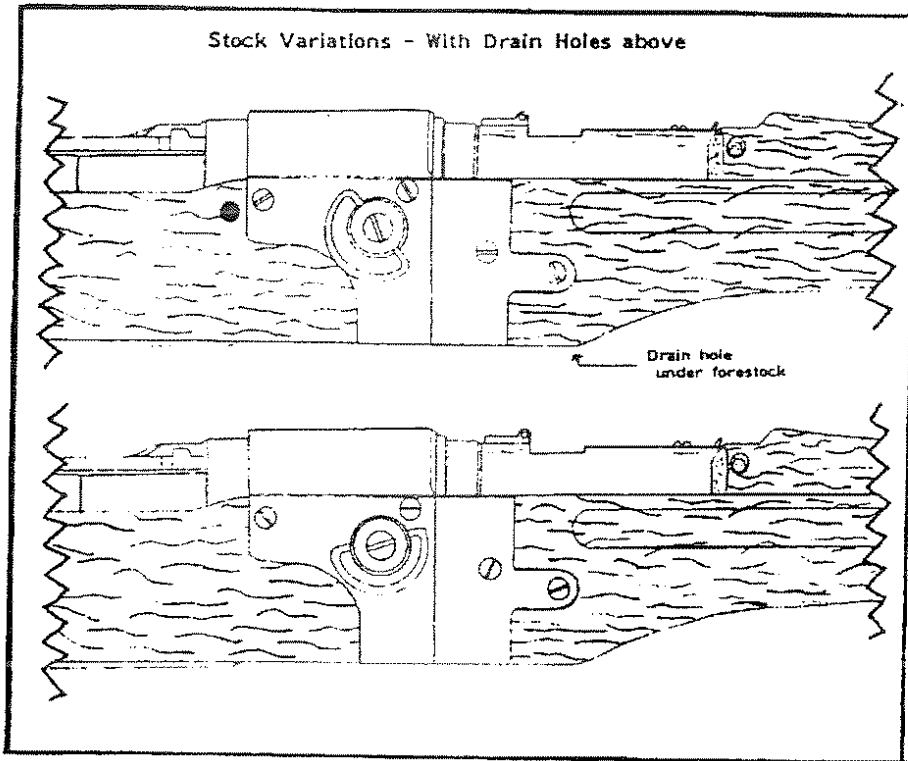
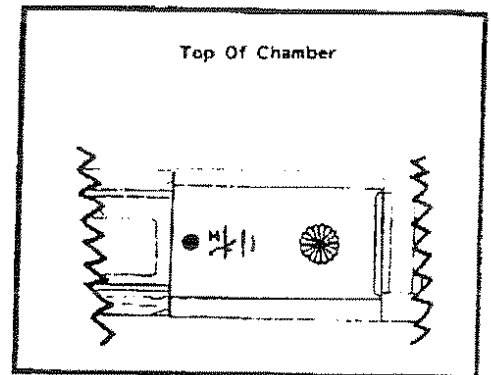
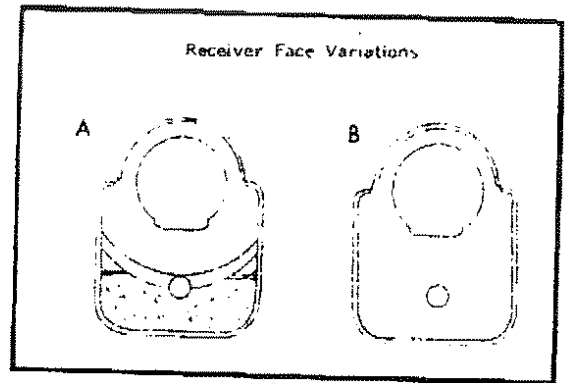
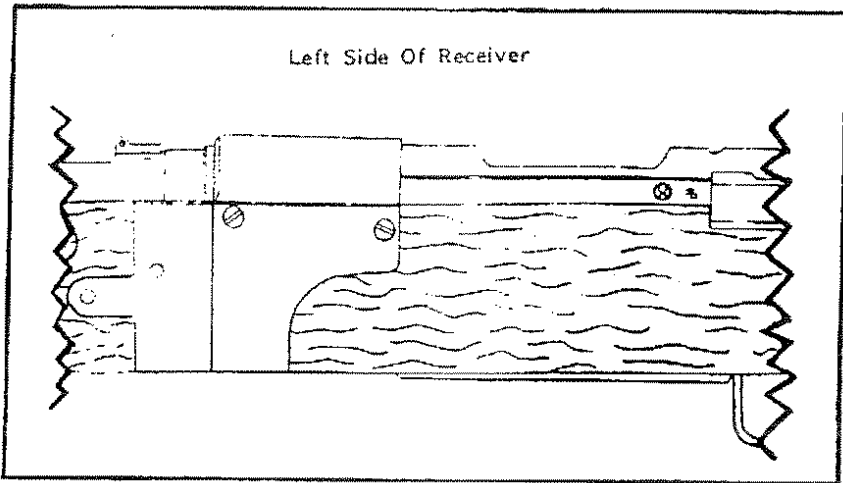


Type 2 Paratroop Rifle I.D. Reference Chart



Matching Numbers? Yes No
 Chrome Bolt Face? Yes No
 Chrome Bore? Yes No
 Floor Plate Latch: (A) Grooves & Hole (B) Wide (C) Plain
 Bolt Gas Escape Hole: (A) Oval (B) Round
 Firing Pin Design: (A) "T" Slot (B) "L" Slot
 (C) Notch & Hole (D) Hole
 Bayonet Lug Number: _____
 Barrel Lock Wedge Number: _____
 Barrel - Chamber End Bock Number: _____

Data on additional Type 2s are welcome. Please write in the serial number and the assembly numbers on the drawing of the left side of the receiver, circle the appropriate part variations and complete the "Comments Section". Please forward a copy of the completed sheet to F. C. Allan, 20 Courtney Place, Palm Coast, FL 32137-8126.

JAPANESE T-2 PARATROOPER RIFLE

BARREL SEPARATION-JOINT ASSEMBLY NUMBERS

Jerry L. Price

With over 100 serial numbers recorded on T-2 rifles, the method used by the Japanese in numbering the barrel separation joint remains a mystery. A complete tabulation of the numbers reported is attached. This tabulation includes the extensive list of numbers previously published in *BANZAI* NOV 85 ISSUE XLII and APRIL 86 ISSUE XLVIII by Francis C. Allen.

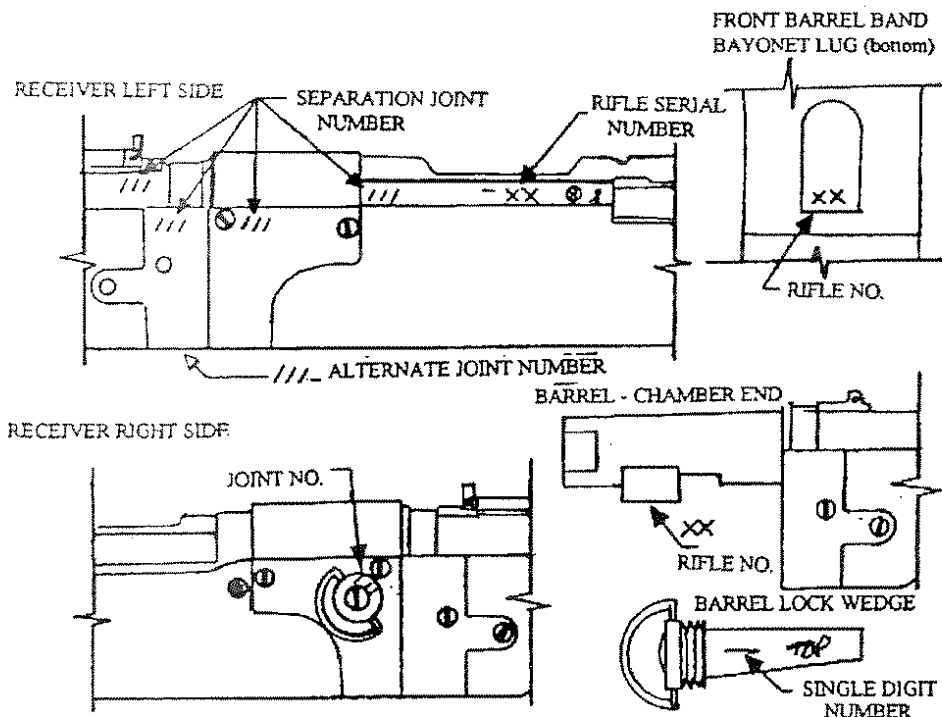
Three things are apparent.

One. Out of a total of 103 rifles, no flange-number exceeds 3-digits. Flange numbers range from 1 to 996, while the rifle serial numbers range from 27 to 18411.

Two. There are repeated numbers in the sample of 103 rifles.

Three. An obvious deep single *punch mark* is present adjacent to the numbers on several of the recorded joint numbers. So far, none of the punch-marked numbers are repeated without punch-marks. Thus we cannot say with certainty that the *punch* starts a new set of numbers. All punched-numbers currently fall in sequence with the other numbers.

One might speculate that one of the of numbers in the duplicate set probably should have a punch mark. Also, if a random system was used, as many people speculate, duplicate numbers would probably be much more frequent. By the time rifle SN 17,171 (on the list) came along, it's flanges are matched with the number 1 preceeded by a single deep punch mark. Maybe we all have missed-the-boat when we did not recognize *other* numbering codes that might be present on these flanges (something less obvious than a *punch-mark*). So are there other marks on these flanges that no one recorded?



TYPICAL LOCATIONS FOR T-2 ASSEMBLY NUMBERS